



National Indigenous Elder Justice Initiative Innovation: Elder Justice Survey

**2017 Title VI Cluster Training
Billings, MT**

**Melissa Wheeler
Research Specialist**

August 16, 2017

“Restoring respect and dignity by honoring Indigenous elders”



Overview

- ❖ **NIEJI Innovation Background**
- ❖ **NIEJI Innovation Research Study Goals/Purpose**
 - Tribe/Consortium
- ❖ **Native Elder Maltreatment Survey Overview**
 - Survey Sample
 - Question Examples
- ❖ **Interviewer's Guide**
- ❖ **How to Get Started**
- ❖ **Conducting the Survey: Step-by-Step Guide**
- ❖ **Frequently Asked Questions**



NIEJI Background

NIEJI Innovation Grant is focused upon development of innovative ways to address the issue of elder abuse among American Indian, Alaska Native, and Native Hawaiian (AI, AN, NH) programs.

The NIEJI Innovation Grant provides opportunities for tribes to:

- ❖ Develop elder abuse protection programs
- ❖ Gather tribal data about elder abuse in Indian Country
- ❖ Produce additional training modules for professionals on working with elder abuse in Indian Country.



NIEJI Goals/Purpose

(NIEJI) Innovation project provides technical assistance to American Indian tribes, Alaskan villages, and Hawaiian homesteads in the collection of local data on elder abuse.

- ❖ Technical assistance includes:
 - Native Elder Maltreatment Survey
 - Assistance in sampling
 - Remote training and consultation for interviewers via email or telephone.
 - Data entry and analysis
 - Data storage
 - Production of tables and comparisons with national data

Tribe/Consortiums

❖ Each Tribe/Consortium will provide:

- A Tribal Resolution documenting participation with Native Elder Maltreatment survey as applicable
- An estimated number of elders (participants) to interview
- Volunteer interviewers to conduct the survey
- Development of recommendations for actions
- Dissemination of the results of tribal leaders and health officials

Native Elder Maltreatment Survey

❖ Purpose

- focus on awareness, elder abuse policy development, and infrastructure building for reporting, investigation, and intervention for indigenous elders.
- data collection of indigenous elder abuse risk indicators through the Title VI programs with a tribally based participatory research model.

❖ Duration of survey

- Participation may take approximately 30-60 minutes.

❖ Participants

- (AI, AN, NH) elders 50 years and older.



Native Elder Maltreatment Survey cont.

❖ Procedures

- Participation is confidential and voluntary. Names will not be placed on any forms.
- Surveys topics include: demographics, cultural identification, experiences and/or observations of elder maltreatment and elder abuse, and general past life experiences.

❖ Risks

- Minimal potential risks in this study. Participants will be asked personal questions some pertaining to possible traumatic experiences.
- Participants may discontinue at any time during the interview without penalty.
- Local and national mental health resources will be provided to participants in case of any effects of participation.



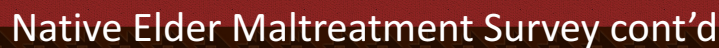
Native Elder Maltreatment Survey cont.

❖ Compensation/Cost

- Participants will not receive any compensation from NIEJI for their participation in this study. There are no costs associated with the participation in this study.
- Tribes will receive their overall tribal data and a national aggregate.

❖ Confidentiality

- Information gathered from the surveys will be coded with an identification number. No names are indicated anywhere.
- All materials collected will be kept in a locked file cabinet in NIEJI office.
- Electronic files of the data will be stored on a secure, access controlled, and password protected server.
- NIEJI may transport coded data to the UND SMHS for data entry and data analysis.



- Refusal to participate or withdrawal from the study will not result in loss of benefits or relationship with the designated site of data collection or the University of North Dakota.
- Participants can withdraw from the interview at any point.
- If the study design is to be changed you will be informed and your consent re-obtained.

NIEJ
Honor - Respect - Dignity
National Indigenous Elder Justice Initiative

Survey Sample

UNIVERSITY OF NORTH DAKOTA

This project was supported by a grant from the National Institute on Aging.

Native Elder Maltreatment Survey

A Subsidiary of Community Living, Department of Health and Human Services, Washington, DC 20540

- Use black or blue pens or a number 2 pencil.
- Make dark marks that fill the oval completely.

- Do not use pens with ink that soaks through the page.
- Make any marks and do not bend survey.

Correct ☐ Incorrect ☐

DEMOGRAPHIC INFORMATION

1. Gender: ☐ Male ☐ Female

2. Age: 3. Zip Code:

4. Tribal Affiliation:

5. District/Chapter House:

6. Education:

- ☐ Less than High School/GED
- ☐ Completed High School/GED
- ☐ Some College
- ☐ Bachelor's Degree

7. Marital Status:

- ☐ Married/Partner
- ☐ Single
- ☐ Separated/Divorced/Widowed

8. Household Status:

- ☐ Own household
- ☐ Assisted Living
- ☐ Long-term care facility
- ☐ With family member

9. How many people live in your household?

Adults Children

10. Employment:

- ☐ Currently employed full or part time
- ☐ Currently unemployed
- ☐ Retired
- ☐ Homemaker
- ☐ Volunteer
- ☐ Student
- ☐ Other (specify):

11. How well do you speak your tribal language?

- ☐ Do not speak your tribal language
- ☐ Speak a little bit, but not very well
- ☐ Speak moderately well (limited sentence)
- ☐ Speak your language very well

12. How well do you speak English language?

- ☐ Do not speak English
- ☐ Speak a little bit, but not very well
- ☐ Speak moderately well (limited sentence)
- ☐ Speak English very well

13. What language do you prefer to use?

- ☐ English
- ☐ Tribal language
- ☐ Both

14. How important is it to you that you maintain your tribal identity, values and practices?

- ☐ Not at all
- ☐ Somewhat
- ☐ Very important

15. How important is it to you that you maintain your non-Native American/Respect?

- ☐ Not at all
- ☐ Somewhat
- ☐ Very important

SUBJECT MATTER

How do you feel about the following factors listed in household income?

- ☐ Access to health care/insurance of these?
- ☐ Lack of job security
- ☐ Lack of income
- ☐ Lack of education, training, or skills
- ☐ Lack of social services, health care, or other benefits
- ☐ Lack of transportation
- ☐ Lack of housing
- ☐ Lack of food
- ☐ Lack of clothing
- ☐ Lack of transportation
- ☐ Lack of social services, health care, or other benefits
- ☐ Lack of transportation
- ☐ Lack of housing
- ☐ Lack of food
- ☐ Lack of clothing

These next questions are about things that sometimes happen to elders. In some of these questions, we use the term "family." By family, we mean anyone who you can consider a family member. Family may include a spouse, partner, spouse or a caregiver who is not related to you.

17. Do you have anyone who spends time with you, taking you shopping or to the doctor?

- ☐ Yes
- ☐ No

18. Are you helping to support someone?

- ☐ Yes
- ☐ No

19. Do you feel uncomfortable with anyone in your family?

- ☐ Yes
- ☐ No

20. Are you sad or lonely?

- ☐ Yes
- ☐ No

21. Has someone hit or tried to hit you with an object in the past month?

- ☐ Yes
- ☐ No

If yes, did this happen in the past month?

- ☐ Yes
- ☐ No

22. Has someone beat you up within the past year?

- ☐ Yes
- ☐ No

If yes, did this happen in the past month?

- ☐ Yes
- ☐ No

23. Has someone threatened you with a knife or gun in the past year?

- ☐ Yes
- ☐ No

If yes, did this happen in the past month?

- ☐ Yes
- ☐ No

24. Has someone used a knife or fired a gun at you in the past year?

- ☐ Yes
- ☐ No

If yes, did this happen in the past month?

- ☐ Yes
- ☐ No

NEEDS OF SERVICES IN THE COMMUNITY

Question Examples

- Do you have anyone who spends time with you, taking you shopping, or to the doctor?
- Are you helping to support someone?
- I know how much money I have and know when money is coming.
- Someone has taken cultural regalia or sacred items for use without my permission.
- I have enough to eat everyday.
- Someone has made it hard for me to move around (moving cane/walker).

Interviewer's Guide

❖ Interviewer's Roles and Responsibilities

- **Build rapport**
- **Interviewer is responsible for appropriately handling any adverse situations.**
 - Clarification is needed to determine if interviewer is considered a mandated reporter. Suspected elder abuse will be reported to appropriate authorities for action as needed.
- **Interviewer's role is not to investigate, probe, or pry for specific names or incidences while gathering information.**
 - If an interviewer is given information about elder abuse or neglect, he or she will need to cooperate with tribal, local, and/or state procedures (who will make the report, to whom will the report be made to etc.).
- **Provide information about community resources** (programs, agencies, identify support network).
- **Participants have the right to self-determination.**

How to Get Started Overview

1. Get tribal resolution
2. Mail signed resolution
3. Count number of elders
4. Begin conducting interviews
5. Mail completed surveys
6. Receive report

TRIBAL COUNCIL RESOLUTION NO. (enter the number/designation here)

Authorizes (enter tribe name here) Participation in Nation-wide Elder Maltreatment Survey

WHEREAS, (enter the name of your tribal government here)

WHEREAS, the prevalence of elder abuse, neglect, and exploitation concerns are a developing issue among tribal communities, is an increasing unmet need in tribal communities; and,
WHEREAS, the National Indigenous Elder Justice Initiative (NIEJI) Innovation Program has received funding through the Administration for Community Living (ACL), to provide technical assistance, generate awareness about elder abuse policy development, and infrastructure building for reporting, investigating, and intervention for American Indian, Alaska Native, and Native Hawaiian elderly and assist these groups in conducting a survey assessment; and,
WHEREAS, in addition to providing technical assistance, the funding to the NIEJI Innovation Program is expected to research and disseminate the results of the research, and
WHEREAS, The NIEJI Innovation Program are asking Tribes throughout the nation to volunteer to participate in a partnership arrangement, to identify elder maltreatment issues of American Indian, Alaska Native, and Native Hawaiian elders nationwide, in which the NIEJI Innovation program and the Tribe/consortium will each assume responsibilities:

What the NIEJI Innovation program will provide:

- > Native Elder Maltreatment Survey
- > Assistance in sampling
- > Training of interviewers via email or telephone
- > Consultation with interviewers via email or telephone
- > Data entry and analysis
- > Data storage
- > Production of tables and comparisons with national statistics

What each Tribe/consortium will provide:

- > A Tribal Resolution documenting participation with Native Elder Maltreatment survey as applicable
- > An estimated number of elders (participants) to interview
- > Volunteer interviewers to conduct the survey
- > Development of recommendations for actions
- > Dissemination of the results of tribal leaders and health officials

WHEREAS, Summary information from your elder maltreatment survey, along with a national comparison report, will be returned to the governing council and to the local contact person; and,
WHEREAS, the confidentiality of enrolled members and Tribal/consortium information is of the utmost importance; therefore, the information in this survey will be collected anonymously by tribal members with the information stored at the UND School of Medicine and Health Sciences within a locked file cabinet and destroyed after a period of three years.

NOW, THEREFORE, BE IT RESOLVED,

That the (enter the name of your tribal government here)

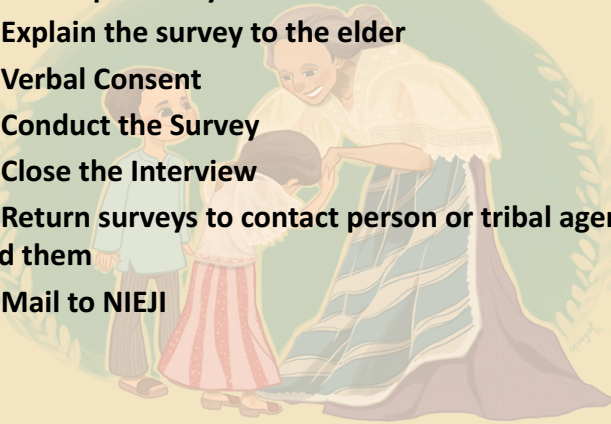
hereby authorizes participation in the "Native Elder Maltreatment Survey." The Tribal Council grants permission to the National Indigenous Elder Justice Initiative Innovation Program at Center for Rural Health at University of North Dakota to use all collected needs assessment information in aggregate format for the purpose of disseminating state, regional, and national results from analyses of the data.

How to Get Started

- ❖ **Get tribal permission**
 - ❖ Allows for participation in the data collection
 - ❖ Ensures that the data belongs to the tribe and makes certain the tribal council receives a copy of the data
 - ❖ Allows NIEJI to process tribal and national aggregate data
- ❖ **Mail signed resolution**
- ❖ **Count number of elders**
 - ❖ Give NIEJI an estimated number of elders participating
- ❖ **Begin conducting interviews**
 - ❖ Put elder at ease
 - ❖ Participation is completely voluntary
- ❖ **Mail completed surveys**
 - ❖ Surveys will be scanned and process onsite at NIEJI office
- ❖ **Receive report**
 - ❖ Tribe will receive copy of report

Conducting the Survey: Step-by-Step Guide Overview

- **Step 1: Find a location to conduct the survey**
- **Step 2: Develop friendly connection with elder**
- **Step 3: Explain the survey to the elder**
- **Step 4: Verbal Consent**
- **Step 5: Conduct the Survey**
- **Step 6: Close the Interview**
- **Step 7: Return surveys to contact person or tribal agency that provided them**
- **Step 8: Mail to NIEJI**



Conducting the Survey: Step-by- Step Guide

- **Step 1: Find a location to conduct the survey**
 - Accessible space for elders with limited mobility
 - Suggested spaces: senior center, elder's home, interviewer's office
 - Places to avoid: public noisy area, non-confidential space, non-accessible
 - Materials: pencils, erasers, extra surveys
- **Step 2: Develop friendly connection with elder**
 - Make elder feel welcome/comfortable
 - Build rapport over small talk
 - Maintain positive attitude
 - Offer snack, tea, coffee
 - Show elder restrooms and emergency exits prior to starting
- **Step 3: Explain the survey to the elder**
 - Introduce yourself and organization
 - Explain goals of finding community needs
 - Survey requested by their tribes/community leaders
 - Randomly selected, no name will appear on surveys
 - Encourage elder to provide honest input
 - Participation is voluntary

Conducting the Survey: Step-by-Step Guide

— Step 4: Verbal Consent

- Given when elder agrees to participate
- Read 'Verbal Consent Form'
- Fill in tribal agency information before prior to starting
- Local and national mental health information will be provided

— Step 5: Conduct the Survey

- Explain overview of survey, duration, and any relevant information
- Ask each question as written: rewording may change the meaning of the questions
- Ask questions clearly and if needed reread the questions
- It is recommended interview fill in answers
- Provide elder with a survey to follow along
- Please take time to answer any questions elders may have and redirect to questions again
- If an elder responses with "I don't know" ask the question again. There are no right and wrong answers.

Conducting the Survey: Step-by-Step Guide

— Step 6: Close the Interview

- Review the survey to make sure all questions are asked and answers marked
- Make sure each question has one answer unless stated 'Mark all that apply' or elder has declined to answer
- Make sure each circle/oval is completely filled in and completely erase mistakes
- Provide local and national community resources information

— Step 7: Return surveys to contact person or tribal agency that provided them

- Do not bend or fold surveys
- Avoid food or drinks near the survey as stains will later delay survey processing

— Step 8: Mail to NIEJI



Frequently Asked Questions

❖ Why is there a need to complete the surveys?

- Elder survey will address elder abuse, neglect, and exploitation in Indian Country and assess for services. Items will address prevalence of elder abuse, types of elder abuse, services available, resource information, and tribal codes by the elders in the communities.

❖ Why was I or my tribe selected?

- Local tribal organizations asked to assist with data collection pertaining to their community.
- Data will be used for local use in identifying risk indicators of elder abuse
- Results from the survey will be used to document and address needs in community.

❖ Describe what data will be recorded?

- Basic demographics, responses to elder abuse, neglect, financial exploitation, and violence will be collected.

❖ Will I be informed of my results?

- Yes, once local survey results have been received and reviewed by the sponsoring tribal agency(ies), participating and community members can view survey results through their local offices' dissemination means.



Questions?

NIEJI Innovation Grant

University of North Dakota School of Medicine and Health Sciences

Center for Rural Health, E231

1301 North Columbia Road | Stop 9037

Grand Forks, North Dakota 58202-9037

Website: <https://www.nieji.org/innovation-grant>

Contact: Melissa Wheeler, Research Specialist

Email: info@nieji.org

Phone: (701) 777-6529

Hours of Operation: Monday – Friday

8:00 – 4:30 pm, Central Time

Contact NIEJI

NIEJI Team

Jacque Gray, PhD



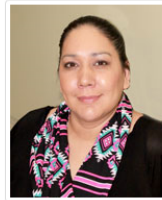
Principal
Investigator

[Email](#)

[\(701\) 777-0582](#)

[Link to bio sketch](#)

Sloan Henry



Project
Coordinator

[Email](#)

[\(701\) 777-6780](#)

[Link to bio sketch](#)

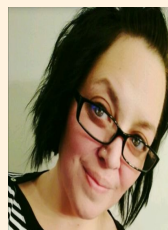


Research/Survey

Melissa Wheeler, MA- Research Specialist

(701) 777-6529

melissa.wheeler@med.und.edu



Tribal Elder Abuse Grants

Joelle Poitra, AA- Project Assistant

(701) 777-5382

Joelle.poitra@med.und.edu